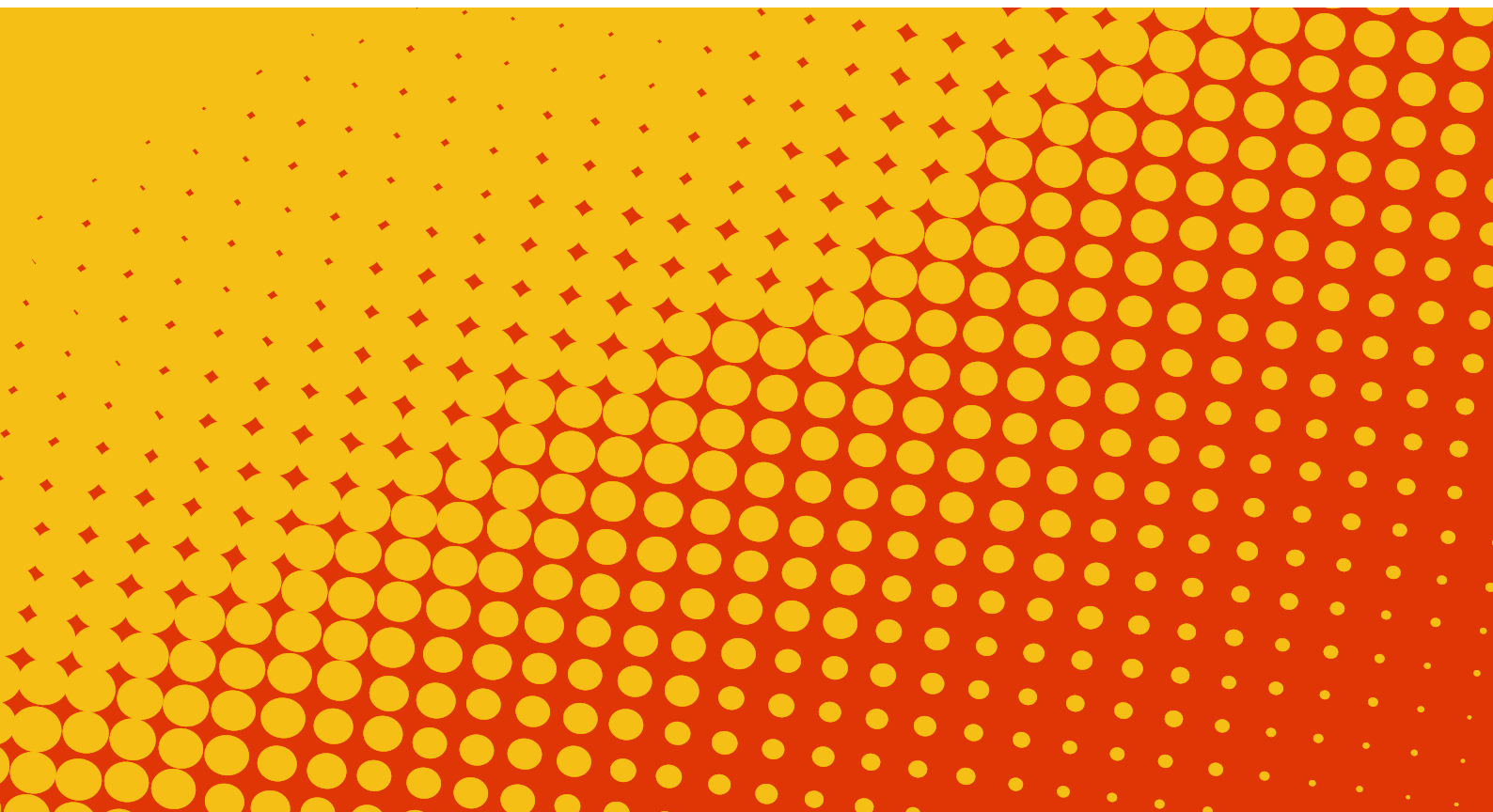




Alemilube

OILERS AND LUBRICATORS



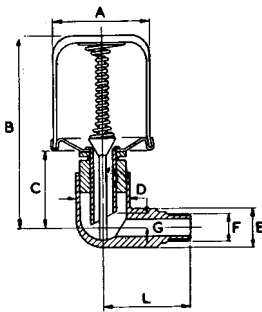
1.1 FIXED – BAYONET TYPE



ABL7528

Constant level oilers are used on a variety of applications, principally on pumps, and have proved very effective over many years. Adams is the largest manufacturer of constant level oilers in Europe, producing an extensive range of both fixed and variable constant level oilers.

Made in steel, zinc plated for protection, reservoirs are made from transparent impact resistant acetate mouldings so oil levels can be checked at a glance.



FINISH: Zinc Plate

MATERIAL: Steel, Plastic

PART N°	D							Suggested List Price
	A MM	B MM	D MM	F THREAD	L MM	CAPACITY ML		
ABL7528	51	93	7	1/4" BSP	51	85	\$108.90	
ABL7538	64	104	7	1/4" BSP	51	158	\$113.40	

Maximum operating temperature – 65°C

Union nuts and nipples available where space does not permit oilers to rotate.

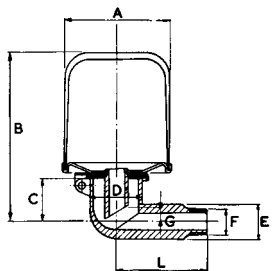
1.2 FIXED – HINGED LID, PLASTIC BOTTLE



ACL7567

FINISH: Zinc Plate

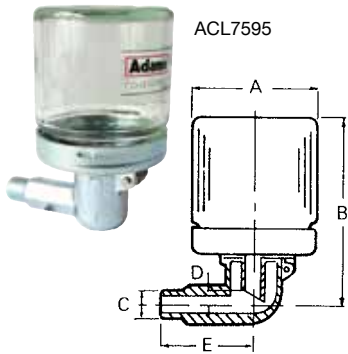
MATERIAL: Steel or Aluminium Body, Plastic Bottle



PART N°	D							Suggested List Price
	A MM	B MM	C THREAD	D MM	E MM	CAPACITY ML	BODY MATERIAL	
ACL7563	51	82	1/8" BSP	7	51	85	Steel	\$52.40
ACL7567	51	82	1/4" BSP	7	51	85	Aluminium	\$52.40
ACL7568	51	82	1/4" NPT	7	51	85	Aluminium	\$52.40
ACL7572	57	87	1/4" BSP	7	51	115	Aluminium	\$52.40
ACL7573	57	87	1/4" NPT	7	51	115	Aluminium	\$52.40
ACL7577	64	94	1/4" BSP	7	51	158	Aluminium	\$52.40
ACL7578	64	94	1/4" NPT	7	51	158	Aluminium	\$52.40

Maximum operating temperature – 65°C

1.3 FIXED – HINGED LID, GLASS BOTTLE



FINISH: Zinc Plate

MATERIAL: Steel, Glass

D

Suggested List Price

PART N°	A MM	B MM	C THREAD	D MM	E MM	CAPACITY ML	
ACL7595	61	92	1/4" BSP	7	51	120	\$58.80
ACL7596	61	92	1/4" NPT	7	51	120	\$58.80

Maximum operating temperature – 100°C

1.4 VARIABLE – SIDE ENTRY



Steel construction, zinc plated for protection, the oil level on these units can be adapted to 3/8". All models are fitted with glass reservoirs up to 500cc capacity designed for ease of replacement in the event of accidental damage.

Side and base entry models with BSP and NPT connections to meet the widest range of applications.

FINISH: Zinc Plate

MATERIAL: Steel, Glass

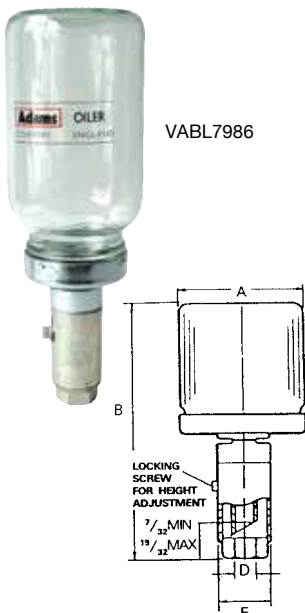
D

Suggested List Price

PART N°	A MM	B		C MM	D THREAD	E MM	CAPACITY ML	
		MIN. MM	MAX. MM					
VABL7973	61	132	142	33	1/4" NPT	26	120	\$115.20
VABL7982	61	132	142	33	1/4" BSP	26	120	\$115.20
VABL7976	64	189	199	33	1/4" NPT	26	220	\$115.20
VABL7985	64	189	199	33	1/4" BSP	26	220	\$115.20
VABL7979	82	222	232	33	1/4" NPT	26	500	\$122.50
VABL7988	82	222	232	33	1/4" BSP	26	500	\$122.50

Maximum operating temperature – 100°C

1.5 VARIABLE – BASE ENTRY



FINISH: Zinc Plate

MATERIAL: Steel, Glass

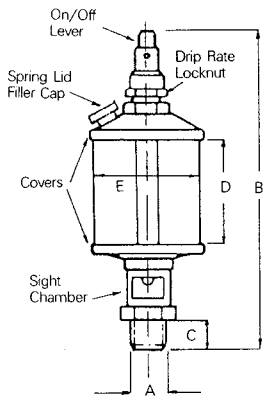
D

Suggested List Price

PART N°	A MM	B		D THREAD	E MM	CAPACITY ML	
		MIN. MM	MAX. MM				
VABL7974	61	132	142	1/4" NPT	26	120	\$113.80
VABL7983	61	132	142	1/4" BSP	26	120	\$113.80
VABL7977	64	189	199	1/4" NPT	26	220	\$113.80
VABL7986	64	189	199	1/4" BSP	26	220	\$113.80
VABL7980	82	217	227	1/4" NPT	26	500	\$121.20
VABL7989	82	217	227	1/4" BSP	26	500	\$121.20

Maximum operating temperature – 100°C

2.1 BRASS - PLASTIC RESERVOIR



Sight gravity feed oilers are widely used as reservoirs for small gravity fed continuous or brush lubrication systems.

FINISH: Natural Brass

MATERIAL: Brass, Plexiglass, Fibre and Nitrile Seals

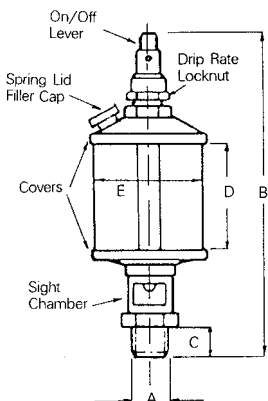
D

Suggested List Price

NEW PART N°	OLD PART N°	A THREAD	B MM	C MM	D MM	E MM	CAPACITY ML	
PSF130	7476	1/8" BSP	97	10	30	30	15	\$116.10
PSF240	7482	1/4" BSP	110	12	36	40	35	\$123.10
PSF250	7487	1/4" BSP	126	12	50	50	80	\$134.10
PSF360	7493	3/8" BSP	140	12	60	60	150	\$162.60
PSF368	7498	3/8" BSP	160	12	80	60	200	\$199.10
PSF468	7500	1/2" BSP	160	12	80	60	200	\$199.10
PSF480	7208	1/2" BSP	185	16	100	80	400	\$240.80
PSF4100	7213	1/2" BSP	210	16	120	100	900	\$257.70

Maximum working temperature – 70°C

2.2 BRASS - GLASS RESERVOIR



Sight gravity feed oilers are widely used as reservoirs for small gravity fed continuous or brush lubrication systems.

FINISH: Natural Brass

MATERIAL: Brass, Glass, Fibre and Nitrile Seals

D

Suggested List Price

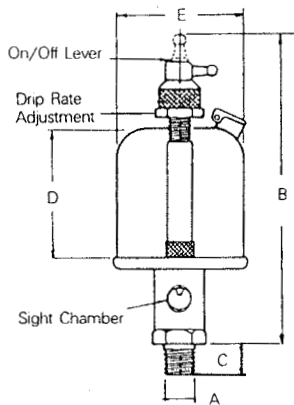
NEW PART N°	OLD PART N°	A THREAD	B MM	C MM	D MM	E MM	CAPACITY ML	
GSF130	7676	1/8" BSP	97	10	30	30	15	\$122.60
GSF239	7681	1/8" BSP	110	12	36	40	35	\$127.70
GSF240	7682	1/4" BSP	110	12	36	40	35	\$127.70
GSF250	7687	1/4" BSP	126	12	50	50	80	\$155.80
GSF360	7693	3/8" BSP	140	12	60	60	150	\$172.40
GSF368	7698	3/8" BSP	160	12	80	60	200	\$215.20
GSF468	7600	1/2" BSP	160	16	80	60	200	\$215.20
GSF480	7608	1/2" BSP	185	16	100	80	400	\$287.60
GSF4100	7613	1/2" BSP	210	16	120	100	900	\$364.00

Maximum working temperature – 80°C

2.3 STEEL PLASTIC RESERVOIR



USF7417



These oilers have shut off needle valve oil feed adjustment features. An acrylic sight tube in shank is provided so that the operator can adjust the feed to the proper volume. This type of oiler is especially adapted where regulation of the oil feed is required and we recommend this streamlined model because of its attractive appearance and the unbreakable feature. Max temp 65°C

FINISH: Nickel MATERIAL: Steel Body, Aluminium Sight Chamber, Plastic Bottle and Stencorra Seals



Suggested List Price

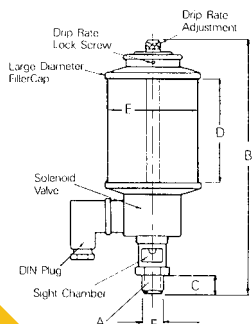
PART N°	A MM	B MM	C MM	D MM	E MM	CAPACITY ML	
USF7402	1/8" BSP	111	10	38	32	21	\$124.80
USF7403	1/4" BSP	111	11	38	32	21	\$124.80
USF7409	1/8" BSP	121	10	48	38	42	\$127.20
USF7410	1/4" BSP	121	11	48	38	42	\$127.20
USF7416	1/8" BSP	130	10	54	44	70	\$127.20
USF7417	1/4" BSP	130	11	54	44	70	\$127.20
USF7424	1/4" BSP	144	13	60	51	98	\$138.80
USF7431	1/4" BSP	149	13	64	57	140	\$140.50
USF7432	3/8" BSP	149	14	64	57	140	\$140.50
USF7438	1/4" BSP	156	13	70	64	182	\$142.70
USF7439	3/8" BSP	156	14	70	64	182	\$142.70

Maximum operating temperature – 65°C

2.4 BRASS – GLASS RESERVOIR – SOLENOID OPERATED



GSD4100



FINISH: Nickel MATERIAL: Brass, Glass, Fibre and Nitrile Seals

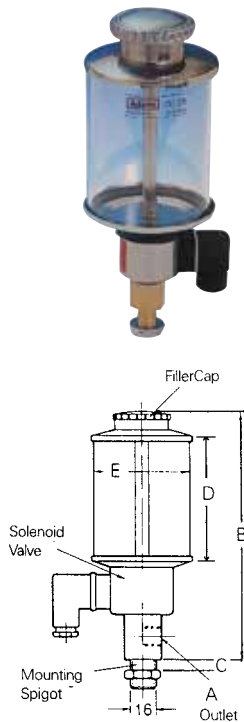


Suggested List Price

NEW PART N°	OLD PART N°	A THREAD	B MM	C MM	D MM	E MM	CAPACITY ML	
GSD460	460	1/2" BSP	150	15	60	60	140	\$493.00
GSD468	468	1/2" BSP	170	15	80	60	200	\$499.00
GSD480	480	1/2" BSP	200	15	100	80	400	\$583.00
GSD4100	4100-240V	1/2" BSP	240	15	120	100	900	\$650.00
GSD4133	4133	1/2" BSP	285	15	150	133	1900	\$1,022.00
GSD4150	4150-240V	1/2" BSP	315	15	180	150	3000	\$1,297.00

Maximum operating temperature – 80°C
Electrical rating – 12VA IP 20 (DIN 40050)

2.5 BRASS – GLASS RESERVOIR – SOLENOID OPERATED



FINISH: Nickel/Brass

MATERIAL: Brass, Glass, Fibre and Nitrile Seals

D

Suggested List Price

NEW PART N°	OLD PART N°	A THREAD	B MM	C MM	D MM	E MM	CAPACITY ML	
GRS260	260	1/4" BSP	150	14	60	60	140	\$501.00
GRS268	268	1/4" BSP	170	14	80	60	200	\$527.00
GRS280	280	1/4" BSP	210	14	100	80	400	\$664.00
GRS2100	2100	1/4" BSP	250	14	120	100	900	\$727.00
GRS2133	2133	1/4" BSP	295	14	150	133	1900	\$1,082.00
GRS2150	2150	1/4" BSP	325	14	180	150	3000	\$1,273.00

Maximum operating temperature – 80°C
Electrical rating – 12VA IP 20 (DIN 40050)

In regard to the drip feed oilers listed in Sections 4.4 and 4.5, the following voltages are available; 12V DC, 24V DC, 110V-50Hz, 230V-50Hz, 415V-50Hz. When ordering, please state voltage required.

2.6 PULSARLUBE OL SERIES SINGLE POINT OIL LUBRICATOR

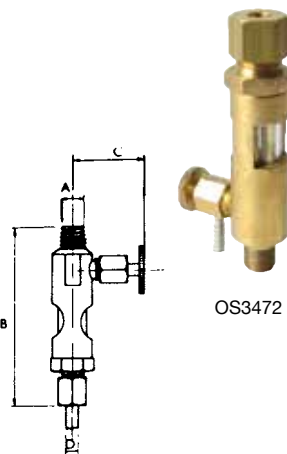


D

Suggested List Price

Part N°	Product Description	
*OL500	Pulsarlube OL Series 500cc oil lubricator	\$442.00
*LB001	Replacement lithium battery pack (blue)	\$94.00

2.7 BRASS – FOR INSTALLATIONS INCORPORATING BULK RESERVOIRS



Provides accurate control of flow rate from bulk reservoir to the bearing. Sight window provides visual flow indication.

FINISH: Natural

MATERIAL: Brass Body and Plexiglass Window

D

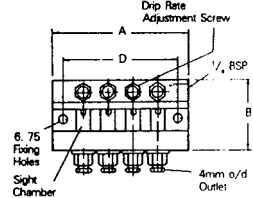
Suggested List Price

PART N°	A THREAD	B MM	C MM	D TUBE CONN.	VENTED	
OS3471	1/8" BSP	76	28.6	3/16" O/D	No	\$129.60
OS3472	1/8" BSP	76	28.6	1/4" O/D	No	\$132.80
OS10078	1/8" BSP	76	28.6	4mm O/D	Yes	\$184.50

2.8 BRASS – FOR INSTALLATIONS INCORPORATING BULK RESERVOIRS



LV10030

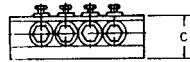


FINISH: Black Anodised

MATERIAL: Aluminium Body and Plexiglass Window

PART N°	NO. OF OUTLETS	A THREAD	B MM	C MM	D MM	Suggested List Price
LV10030	4	97	49.6	30.2	81	\$808.00
LV10031	6	132	49.6	30.2	116	\$1,057.00

Threads – 1/4" BSP (f)
Tube connections – 4mm od

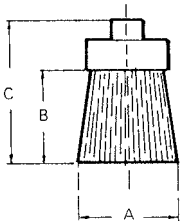


D

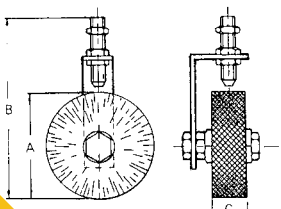
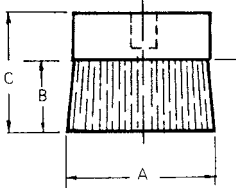
2.9 LUBRICATING BRUSHES TO SUIT SIGHT GRAVITY DRIP FEED OILERS



SPRBC16



SPFNC57



Round: 1/8" BSP

NEW PART N°	OLD PART N°	A	B	C	BODY	Suggested List Price
SPRNC6.5	*	6.5	50	65	Brass	\$129.70
SPRBC6.5	*	6.5	50	65	Brass	\$178.90
SPRNC16	10079	16	30	53	Brass	\$116.40
SPRBC16	*	16	30	53	Brass	\$151.60
SPRNC25	*	25	45	70	Brass	\$137.30
SPRBC25	*	25	45	70	Brass	\$169.30
SPRNC30	*	30	45	70	Brass	\$153.20

"N" = brass body and nylon brush. "B" = brass body and steel brush.

D

Flat: 1/8" BSP

NEW PART N°	OLD PART N°	A	B	C	BODY	Suggested List Price
SPFNC57	*	57	30	50	Aluminium	\$156.50

Aluminium body and nylon brush.

D

Circular: 1/8" BSP

NEW PART N°	OLD PART N°	A	B	C	BODY	Suggested List Price
RSMN80	*	80	137	25	Steel Bracket	\$310.00

Steel bracket and nylon brush.

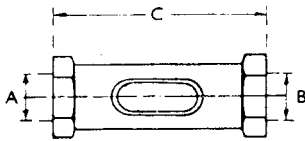
D

3.1 OIL LINE FLOW SIGHT GAUGE – BRASS

The sight-window permits the direct observation of oil flow.



OL4285



FINISH: Natural

MATERIAL: Brass, Glass - Nitrile

D

Suggested List Price

PART N°	A THREAD	B THREAD	C MM	HEX A/FLATS	
OL4279	1/8" BSP	1/8" BSP	70	19	\$94.40
OL4281	1/4" BSP	1/4" BSP	62	21	\$98.30
OL4283	3/8" BSP	3/8" BSP	76	31.75	\$157.90
OL4285	1/2" BSP	1/2" BSP	70	32	\$157.90

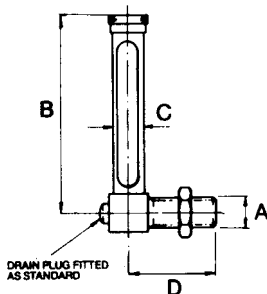
Maximum working pressure – 29psi
Maximum working temperature – 80°C

3.2 90° – WITH LOCKNUT

Machined to permit generous oil passage, the glass is held between oil sealing washers by an independent locking nut.



FGM2100



FINISH: Natural

MATERIAL: Brass and Glass

D

Suggested List Price

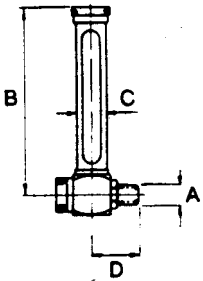
NEW PART N°	OLD PART N°	A THREAD	B MM	C MM	D MM	
FGM160	3225	1/8" BSP	60	13	27	\$70.20
FGM260	*	1/8" BSP	60	13	27	\$62.60
FGM280	3203	1/4" BSP	80	13	27	\$70.30
FGM2100	3204	1/4" BSP	100	13	27	\$73.00
FGM2125	3205	1/4" BSP	125	13	27	\$79.10
FGM2150	3206	1/4" BSP	150	13	27	\$88.10
FGM2175	3207	1/4" BSP	175	13	27	\$91.20
FGM2200	3208	1/4" BSP	200	13	27	\$97.40
FGM2250	3210	1/4" BSP	250	13	27	\$106.30
FGM2300	*	1/4" BSP	300	13	27	\$111.70

Maximum working temperature – 90°C

3.3 90° - WITH BANJO COUPLING



FGB280



FINISH: Natural

MATERIAL: Brass and Glass

D

Suggested List Price

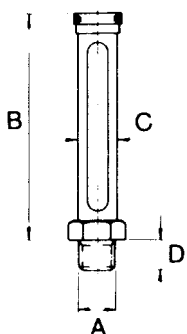
NEW PART N°	OLD PART N°	A THREAD	B MM	C MM	D MM	
FGB260	*	1/4" BSP	60	16	30	\$90.30
FGB280	3303	1/4" BSP	80	16	30	\$94.40
FGB2100	3304	1/4" BSP	100	16	30	\$97.40
FGB2125	3305	1/4" BSP	125	16	30	\$100.50
FGB2150	3306	1/4" BSP	150	16	30	\$109.60
FGB2175	3307	1/4" BSP	175	16	30	\$112.50
FGB2200	3308	1/4" BSP	200	16	30	\$118.50
FGB2250	3310	1/4" BSP	250	16	30	\$127.50
FGB2300	*	1/4" BSP	300	16	30	\$105.60

Maximum working temperature – 90°C

3.4 VERTICAL - WITH LOCKNUT



FGV280



FINISH: Natural

MATERIAL: Brass and Glass

D

Suggested List Price

NEW PART N°	OLD PART N°	A THREAD	B MM	C MM	D MM	
FGV260	*	1/4" BSP	60	13	8	\$68.80
FGV280	3303	1/4" BSP	80	13	8	\$73.00
FGV2100	3304	1/4" BSP	100	13	8	\$76.00
FGV2125	3305	1/4" BSP	125	13	8	\$79.10
FGV2150	3306	1/4" BSP	150	13	8	\$88.10
FGV2175	3307	1/4" BSP	175	13	8	\$91.20
FGV2200	3308	1/4" BSP	200	13	8	\$97.40
FGV2250	3309	1/4" BSP	250	13	8	\$100.50
FGV2300	3310	1/4" BSP	300	13	8	\$106.30

Maximum working temperature – 90°C

4.1 SCREW IN - STEEL - WITH OR WITHOUT REFLECTOR



BWS4042



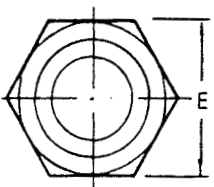
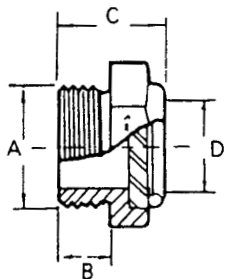
BWS4043



BWS4054



BWS4046



The "Adams" Steel/Glass Window Nut provides a most convenient form of inspection window for oil, fluid level indication, or similar applications. They are machined to a high degree of accuracy and fitted with a clear toughened glass window and nitrile "O" Ring as standard.

FINISH: Zinc Plate

MATERIAL: Steel and Glass

D

Suggested
List Price

PART N°	A THREAD	B MM	C MM	D MM	E MM	Suggested List Price
BWS4042						\$63.20
BWS4042R	3/4" BSP	12.7	25.4	19.1	33.0	\$67.70
BWS4052						\$77.00
BWS4052R	3/4" NPT	20.6	33.3	19.1	33.0	\$79.60
BWS4043						\$83.40
BWS4043R	1" BSP	15.9	33	25.4	42.4	\$85.90
BWS4053						\$99.40
BWS4053R	1" NPT	22.2	39.3	25.4	42.4	\$102.00
BWS4044						\$107.80
BWS4044R	1-1/4" BSP	15.9	33	31.8	52.1	\$110.90
BWS4054						\$123.80
BWS4054R	1-1/4" NPT	22.9	39.3	31.8	52.1	\$126.60
BWS4045						\$127.60
BWS4045R	1-1/2" BSP	15.9	33	38.1	61.2	\$132.60
BWS4055						\$130.20
BWS4055R	1-1/2" NPT	25.4	42	38.1	61.2	\$133.20
BWS4046						\$173.60
BWS4046R	2" BSP	17	34.9	49.0	69.9	\$176.40
BWS4047						\$227.90
BWS4047R	2" NPT	17	34.9	49.0	69.9	\$230.40

Suffix "R" means "With Reflector"

Maximum working pressure – 147psi. Maximum working temperature – 100°C.

For application requiring special seals or where pressures and temperatures exceed those stated please consult our Technical Department.

4.2 SCREW IN - BRASS - WITH OR WITHOUT REFLECTOR

D



BW4040TG

Fitted with Perspex Window

PART N°	A THREAD	B MM	C MM	D MM	E MM	Suggested List Price
BW4040P	3/8" BSP	19.1	6.2	17.3	11.1	\$30.50
BW4041P	1/2" BSP	23.4	10.3	23.8	12.7	\$36.80
BW4041PR	1/2" BSP	23.4	10.3	23.8	12.7	\$40.00

Suffix "R" means "With Reflector"

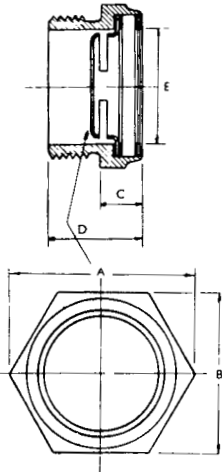
D

Fitted with Toughened Glass Window

PART N°	A THREAD	B MM	C MM	D MM	E MM	Suggested List Price
BW4040TG	3/8" BSP	19.1	6.2	17.3	11.1	\$35.70
BW4041TGR	1/2" BSP	23.4	10.3	23.8	12.7	\$45.20

Suffix "R" means "With Reflector"

These window nuts are machined from solid brass and fitted with either perspex or toughened glass. Recommended for transmissions and gear cases of all kinds. Maximum working pressure – 100psi. Maximum working temperature – 70°C (Perspex). Maximum working temperature – 100°C (Toughened Glass)



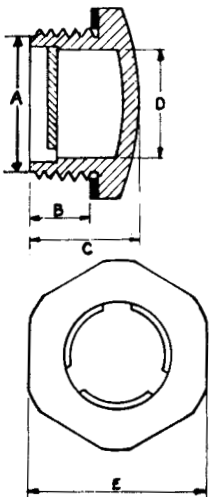
4.3 SCREW IN - PLASTIC - WITH REFLECTOR



PW4213



PW4217



Plastic oil level windows are moulded in a high tensile plastic and are fully resistant to weather and sunlight. All sizes supplied with oil resistant seals. The design of the rear white disc ensures that no liquid can remain in the indicator when the level falls below it.

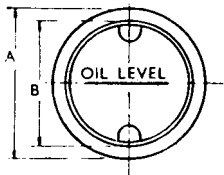
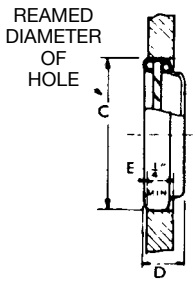
D

MATERIAL: Plexiglass

PART N°	A THREAD	B MM	C MM	D MM	E MM	Suggested List Price
PW4210	1/4" BSP	8.2	13.2	6	17	\$10.70
PW4211	3/8" BSP	9.2	15.7	9	22	\$10.70
PW4212	1/2" BSP	10	18	12	24	\$10.70
PW4213	3/4" BSP	12.2	21.2	16	30	\$12.00
PW4214	1" BSP	11.6	20.6	22	36	\$19.80
PW4215	1-1/4" BSP	12.8	22.3	28	46	\$26.40
PW4216	1-1/2" BSP	13.8	25	33	50	\$33.70
PW4217	2" BSP	13.8	26	43	60	\$48.20

Material – Plexiglass. Maximum working pressure – 42psi. Maximum working temperature – 80°C
A range of metric threaded plastic oil level windows also available - Ex UK.

4.4 PRESSED IN - STEEL



FINISH: Zinc Plate

MATERIAL: Steel and Perspex

D

Suggested List Price

PART N°	HOLE DIAMETER	B MM	D MM	E MM	Suggested List Price
DW4061	31.75 to 31.80	25.4	8.7	0.4	\$13.30
DW4061A					\$13.50
DW4062	38.10 to 38.15	31.8	9.5	0.4	\$14.30
DW4062A					\$14.80
DW4063	50.80 to 50.85	44.5	10.8	0.4	\$19.40
DW4063A					\$19.60
DW4064	22.23 to 22.28	17.5	7.1	0.4	\$11.90
DW4064A					\$12.10

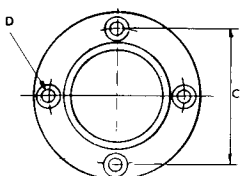
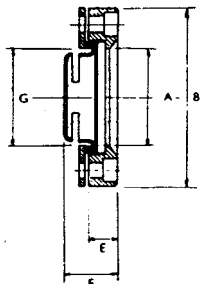
Maximum working pressure – 10psi
 Maximum temperature – 70°C with 3psi

Suffix 'A' means "Oil Level" and line is engraved on window.

This Oil Window is eminently suitable for indicating, oil level and flow in reservoir, etc. It is a self-contained one piece unit, constructed of Plated Steel with a window of clear unbreakable plastic. This window is held in place by a special oil proof synthetic gasket.

Installation is extremely simple – the unit is pressed into a reamed hole in the wall of the reservoir. To ensure wall tightness the surface of the hole should be covered with a thin coat of hermatite or other oil-proof sealing material.

4.5 FLUSH MOUNTING - BRASS



FINISH: Natural

MATERIAL: Brass and Toughened Glass

D

Suggested List Price

PART N°	A MM	B MM	C MM	D MM	E MM	F MM	G MM	Suggested List Price
CW4032	31.8	57.2	46.8	4.8	9.5	17.5	31.8	\$79.00
CW4033	38.1	65.1	54.8	4.8	9.5	17.5	38.1	\$93.80

Maximum working pressure – 14psi
 Maximum working temperature – 100°C

Same application as Style "BW" Series except socket head screws are used for flush mounting. Standard unit has reflector to increase visibility of oil. When there is excessive heat, pyrex glass and synthetic rubber gaskets can be supplied to suit this condition.



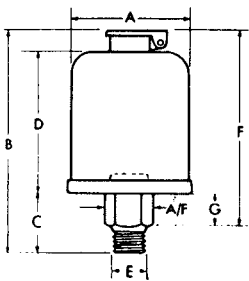
SPRING LID AND BALL CLOSING OIL HOLE COVERS

WILKINS
OILER
ENGLAND

5.1 SCREW IN – VERTICAL – TRANSPARENT PLASTIC RESERVOIR – WITHOUT WICK



OR7714



FINISH BASE: Zinc Plate, Filler Breather - Nickel Plate

MATERIAL: Steel, Bottle - Plastic

D

Suggested List Price

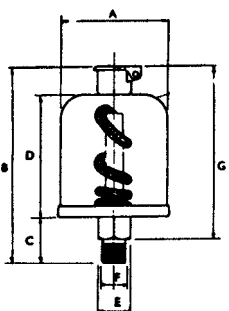
PART N°	A MM	B MM	C MM	D MM	A /FLATS	E THREAD	F MM	G MM	CAPACITY ML	
OR7708	38	74	11	45	.562"	1/4" BSP	62	2	35	\$44.10
OR7714	44	87	11	54	.562"	1/4" BSP	74	6	63	\$51.70
OR7724	57	99	11	63	.562"	1/4" BSP	86	6	127	\$54.00
OR7730	64	106	11	69	.562"	1/4" BSP	93	6	170	\$55.20

Maximum operating temperature of 65°C

5.2 SCREW IN – VERTICAL – TRANSPARENT PLASTIC RESERVOIR – WITH WICK



SWF7712



FINISH BASE: Zinc

MATERIAL: Steel, Bottle - Plastic

D

Suggested List Price

PART N°	A MM	B MM	C MM	D MM	E MM	F THREAD	G MM	CAPACITY ML	
SWF7701	32	63	8	37	.500"	1/8" BSP	55	17	\$38.70
SWF7706	37	73	8	47	.500"	1/8" BSP	65	35	\$38.70
SWF7712	44	88	13	53	.600"	1/4" BSP	75	63	\$48.30
SWF7717	50	94	13	59	.600"	1/4" BSP	81	84	\$48.30

Visible oil supply always and no danger of breaking. Automatic feed positive and dependable.

Style "SWF" is an Oiler which automatically feeds oil to the bearing allowing the oil reserve to be constantly visible.

No adjustment is necessary and they are particularly recommended for machines which operate continuously.

Maximum operating temperature of 65°C

5.3 BALL CLOSING OIL HOLE COVERS – DRIVE IN



A1402

GENERAL USE

Is a widely used, drive-in oil hole cover particularly suited to applications where a flush fitting is essential.

They will drive into die-castings without danger of cracking the metal.

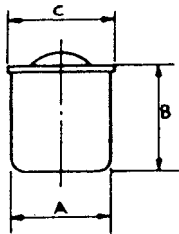
CONSTRUCTION

All style A oilers are made with exact uniform drive shanks to very close limits.

Due to their rigid construction these oilers may be driven into position without the danger of collapsing and loss in assembly is reduced to a minimum.

The spout of an oil can can be inserted into these oilers very easily. They are self-closing and dirt and grit cannot reach and damage the bearings equipped with these oilers.

STYLE "A"



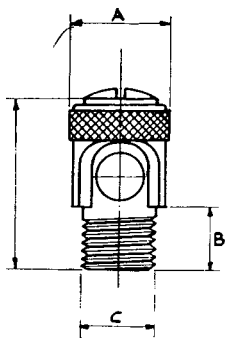
FINISH: Zinc plate

MATERIAL: Steel



PART N°	HOLE SIZE	DRIVE DIAMETER A	OVERALL HEIGHT B MM	OVERALL DIAMETER C MM	Suggested List Price
A1401	3/16"	.190"-.192"	4.8	5.6	\$2.18
A1402	1/4"	.253"-.255"	5.6	7.1	\$2.18
A1403	5/16"	.315"-.317"	9.5	8.7	\$3.10
A1404	3/8"	.378"-.380"	8.7	10.3	\$7.00

5.4 SCREW IN – VERTICAL – MISC. THREADS – WINKLEY ROTATING SLEEVE



FINISH: Nickel Plate

MATERIAL: Brass



PART N°	A MM	B MM	H MM	C THREAD	Suggested List Price
I2202	8.7	6.4	17.5	1/4" x 26 TPI	\$22.40
I2204	8.7	6.4	17.5	3/16" x 32 TPI	\$22.40
I2209	11.1	6.4	19.1	5/16" x 18 TPI	\$22.40
I2215	12.7	7.9	22.2	1/8" BSP	\$22.40

Is a dust proof oil hole cover known as the "Winkley" rotating sleeve type.

It may be used in a vertical or in a horizontal position as necessary.

It is fitted with an anti-vibrating device against the rotating sleeve and prevents the head turning or opening when subject to vibration. A slot for a screwdriver is provided.

5.5 DRIVE IN – VERTICAL – SHOULDER

Made from steel, the style BS oil hole covers are designed for a drive fit into a drilled hole. The shoulder permits insertion to a predetermined depth.

The large size oilers in the range make an effective filler cap on oil reservoirs where their self-closing lids ensure the filling orifice is adequately covered.



FINISH: Nickel Plate

MATERIAL: Steel

Suggested List Price

PART N°	HOLE SIZE	A MM	B MM	C MM	D MM	E MM	Suggested List Price
BS1511	1/4"	7.2	5.6	11.9	15.9	.253" - .255"	\$3.90
BS1512	3/16"	7.2	5.6	11.9	15.9	.190" - .192"	\$3.90
BS1513	6mm	7.2	5.6	11.9	15.9	6mm Taper	\$3.90
BS1516	5/16"	8.9	6.4	13.5	19.1	.315" - .317"	\$4.10
BS1518	7mm	8.9	6.4	13.5	19.1	7mm Taper	\$4.10
BS1521	3/8"	10.5	7.1	15.1	20.6	.378" - .380"	\$5.20
BS1523	8mm	10.5	7.1	15.1	20.6	8mm Taper	\$5.40
BS1536	10mm	12.7	7.1	18.3	25.4	10mm Taper	\$5.80
BS1549	5/8"	19	9.5	23.8	34.9	.628" - .630"	\$16.90
BS1555	3/4"	25.4	11.1	27	41.3	.753" - .755"	\$18.60
BS1556	7/8"	25.4	12.7	28.6	41.3	.878" - .880"	\$22.30
BS1560	1"	31.8	14.3	33.3	47.6	1.003"-1.005"	\$23.20
BS1573	1 1/4"	41.3	17.5	38.1	63.5	1.253"-1.256"	\$26.10
BS1574	1 1/2"	41.3	17.5	38.1	63.5	1.503"-1.507"	\$26.10



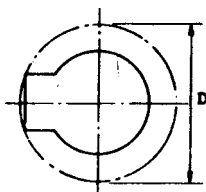
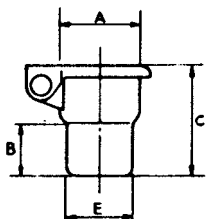
BS1512



BS1521



BS1560



5.6 DRIVE – VERTICAL – PLAIN



B1604

CONSTRUCTION

Style B oil hole covers are known as a plain drive-in type. The shanks are of exact uniform size and generous oil passage is provided. Equipped with a spring hinged lid, easily opened with an oil can spout and is self-closing.

The cover is notched to hide the spring end ensuring a smooth surface. Wiping waste cannot catch on the spring nor can the operator's hands be injured.

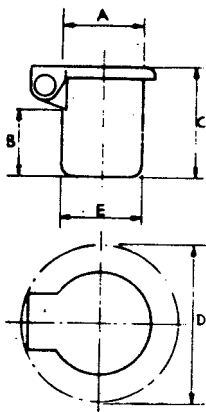
These oilers are all steel construction and may be driven into position without danger of crushing and loss in assembling is reduced to a minimum. They also drive into die castings without danger of cracking the metal.

Like the style BS oil hole covers, the larger sizes can be used as filler caps for reservoirs. Mesh strainers can be supplied to trap foreign bodies so the oil in the reservoir is free of debris.



B1625

STYLE "B"



FINISH: Nickel Plate

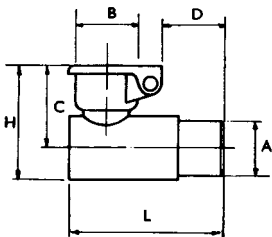
MATERIAL: Steel



Suggested List Price

PART N°	HOLE SIZE	A MM	B MM	C MM	D MM	E MM	
B1604	1/4"	1/4"	6.5	15.8	15.9	.253"-.255"	\$9.00
B1614	1/2"	1/2"	9.5	16.7	25.4	.503"-.505"	\$11.20
B1620	5/8"	5/8"	10.3	19.1	31.8	.628"-.630"	\$16.90
B1623	3/4"	3/4"	13.5	23.8	34.9	.753"-.755"	\$17.00
B1625	1"	1"	14.3	25.4	41.3	1.003"-1.005"	\$19.90
B1628	1 1/4"	1 1/4"	15.9	27	47.6	1.253"-1.256"	\$25.70
B1640	1 3/4"	1 3/4"	14.3	25.4	69.9	1.753"-1.757"	\$25.70
B1650	2 1/4"	2 1/4"	20.6	31.8	79.4	2.253"-2.258"	\$33.70

5.7 DRIVE IN – 90° – SHOULDER



A two piece construction thus providing an alternative to style LS and allowing a wide choice of shank lengths for special applications.

FINISH: Nickel Plate

MATERIAL: Body - Brass, Filler - Steel



Suggested List Price

PART N°	HOLE SIZE A	B MM	C MM	D MM	H MM	L MM	
L2511	.253" - .255"	6.4	10.3	8.7	14.3	19.1	\$10.50
L2531	.378" - .380"	9.5	14.3	11.1	19.8	27	\$17.70

5.8 SCREW-IN – VERTICAL – MISCELLANEOUS THREADS



CONSTRUCTION

The body is one piece and turned from solid bar stock. Provided with a generous oil passage. Threads are die cut and accurate. Equipped with patented spring hinge lid, easily opened with an oil can spout and is self-closing. The cover is notched to hide end of spring, causing a smooth surface. Wiping waste cannot catch on spring end, nor can the operators hands be injured in handling.

FINISH: Nickel Plate

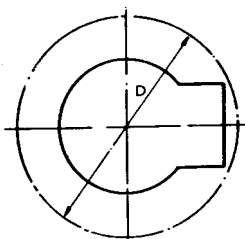
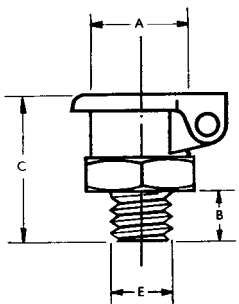
MATERIAL: Body - Brass, Filler - Steel



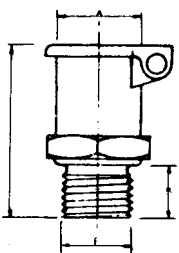
Suggested List Price

PART N°	A	B MM	C MM	D MM	E THREAD	HEX. A/FLATS	Suggested List Price
C1730	1/4"	4.8	14.3	15.9	3/16"-32 TPI	5/16"	\$15.50
C1732	1/4"	4.8	14.3	15.9	1/4"-32 TPI	5/16"	\$15.50
C1733	1/4"	5.6	14.3	15.9	1/4"-26 TPI	5/16"	\$15.50
C1735	1/4"	4.8	14.3	15.9	10-32 TPI	5/16"	\$15.50
C1736	1/4"	4.8	14.3	15.9	2 BA	5/16"	\$15.50
C1740	5/16"	5.6	20.6	15.9	1/4"-20 TPI	3/8"	\$15.50
C1743	5/16"	5.6	20.6	15.9	5/16"-18 TPI	3/8"	\$15.50
C1748	3/8"	6.4	17.5	20.6	3/8"-24 TPI	7/16"	\$15.50
C1749	3/8"	6.4	17.5	20.6	1/8" BSP	7/16"	\$15.50
C1752	7/16"	7.1	18.3	23.8	7/16"-24 TPI	1/2"	\$15.50
C1763	5/8"	11.1	26.2	31.8	1/4" BSP	1 1/16"	\$28.80
C1787	3/8"	38.1	50.8	23.8	1/8" BSP	7/16"	\$28.80
C1791	2"	17	87.5	58	3/4" NPT	1-1/4"	\$38.50
C1792	2"	17	87.5	58	3/4" BSP	1-1/4"	\$38.50

STYLE "C"



STYLE "F"



GUIDES FOR OILING

Dirt and grit cannot reach and injure bearings equipped with these oil hole covers. The cover sits above the bearing, is quickly noticed and naturally not overlooked during the process of oiling.

FINISH: Nickel Plate

MATERIAL: Body - Brass, Filler - Steel



Suggested List Price

PART N°	A	B MM	C MM	D MM	E THREAD	HEX. A/FLATS	Suggested List Price
F2141	15.9	9.5	31.8	31.8	1/8" BSP	.71"	\$28.10
*F2141WF	15.9	9.5	31.8	31.8	1/8" BSP	.71"	\$34.00

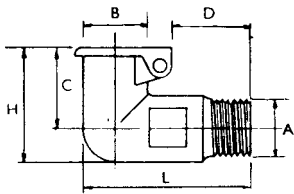
*With wick feed and syphon tube.

5.9 SCREW IN – 90° – MISCELLANEOUS THREADS



L2602

STYLE "L"



CONSTRUCTION

The body of style LS is formed in one piece from hot brass stampings and carefully drilled to cause a generous oil passage. This particular oil cup is used extensively on small motors and machinery where side oiling is necessary. Threaded shanks are die cut and accurate. Drive shanks are machined to exact uniform sizes.

FINISH: Nickel Plate

MATERIAL: Body - Brass, Filler - Steel

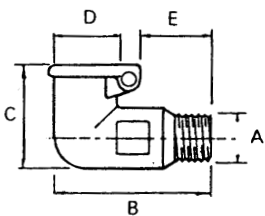


PART N°	A THREAD	B MM	C MM	E MM	H MM	L MM	Suggested List Price
L2601	3/16"-32 TPI	6.4	14.3	8.7	14.3	19.1	\$14.50
L2602	1/4"-32 TPI	6.4	14.3	8.7	14.3	19.1	\$14.50
L2603	1/4"-26 TPI	6.4	14.3	8.7	14.3	19.1	\$14.50
L2604	10-32 TPI	6.4	14.3	8.7	14.3	19.1	\$14.50



LS2630

STYLE "LS"



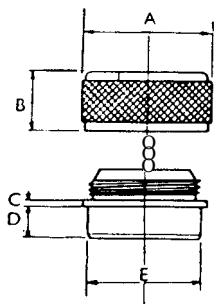
FINISH: Nickel Plate

MATERIAL: Body - Brass, Filler - Steel



PART N°	A THREAD	B MM	C MM	D MM	E MM	Suggested List Price
LS2616	5/16"-32 TPI	23.8	15.9	7.9	10.3	\$16.20
LS2630	1/8" BSP	25.4	20.6	9.5	11.9	\$18.30
LS2633	3/8"-24 TPI	25.4	20.6	9.5	11.9	\$18.30
LS2680	1/8" NPT	34.9	25.4	15.9	14.3	\$26.10
LS2681	1/8" BSP	34.9	25.4	15.9	14.3	\$26.30

5.10 OIL FILLER CAPS AND ADAPTORS



CONSTRUCTION AND USE

Brass body and Anodised Aluminium Caps. Features a knurled screw top which is chained to body to prevent loss. This is a dust proof oil filler cap and has many applications. Caps attached to adaptors by internal chain.

FINISH: Natural Anodise

MATERIAL: Body - Brass, Cap - Aluminium



PART N°	HOLE SIZE	A MM	B MM	C MM	D MM	E MM	Suggested List Price
AH2181	3/4"	23.8	9.5	2.8	6.4	.752"-.754"	\$52.40
AH2182	1-5/16"	38.1	17.5	1.6	9.5	1.315"-1.317"	\$83.80
AH2183	1-5/8"	49.2	10	2.8	11.9	1.627"-1.629"	\$143.10

5.11 SCREW-IN – VERTICAL – BSP THREADS – WITH OR WITHOUT WICK

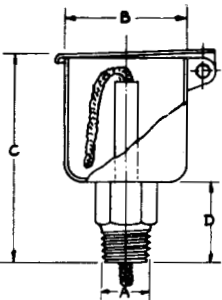
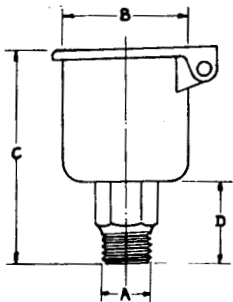


D1914



D1960

STYLE "D"



CONSTRUCTION AND USE

Style D oil hole covers are equipped with patented spring hinge lid, easily opened with oil can spout and self-closing.

The cover is notched to hide end of spring causing a smooth surface. Wiping waste cannot catch on spring end, nor can hands be injured in handling.

FINISH: Nickel Plate

MATERIAL: Steel



Suggested List Price

PART N°	A THREAD	B MM	C MM	D MM	HEX A/FLATS	Suggested List Price
D1914	1/8" BSP	15.9	36.3	17.5	7/16"	\$21.10
D1914WF						\$27.60
D1920	1/8" BSP	19.1	32.5	17.5	7/16"	\$21.10
D1920WF						\$27.60
D1927	1/8" BSP	25.4	47.6	20.6	9/16"	\$24.40
D1927WF						\$28.90
D1928	1/4" BSP	25.4	47.6	20.6	9/16"	\$24.40
D1928WF						\$28.90
D1937	1/8" BSP	31.8	50.8	20.6	9/16"	\$27.70
D1937WF						\$32.00
D1938	1/4" BSP	31.8	50.8	20.6	9/16"	\$27.70
D1938WF						\$32.00
D1952	1/4" BSP	41.3	65.3	23.8	11/16"	\$33.80
D1952WF						\$39.80
D1958	1/4" BSP	57.2	85.7	28.6	11/16"	\$51.70
D1958WF						\$57.80
D1959	3/8" BSP	57.2	85.7	29.4	11/16"	\$51.70
D1959WF						\$57.80
D1960	1/2" BSP	57.2	88.9	31.8	7/8"	\$55.20
D1960WF						\$61.80

SPECIAL NOTE

The letters WF following the part numbers denote they have syphon tube and wick fitted.

GUIDES TO OILING

The upright prominent appearance of this oiler causes it to be instantly recognised as an oil cup and naturally it is not overlooked during the process of oiling.

5.12 SCREW-IN – VERTICAL – BSP THREADS WITH OR WITHOUT WICK

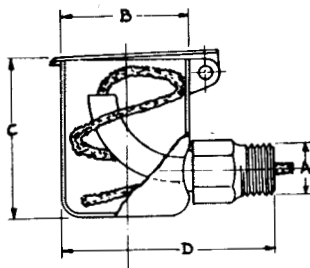
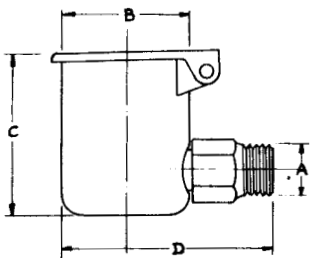


M3052



M3011

STYLE "M"



CONSTRUCTION AND USE

Style M is a very popular oil cup where side oiling is necessary. It is substantially made, the cup drawn from heavy gauge steel is pierced and plunged to form a reliable fixing for the hexagon shank, which is machined from the solid bar stock and is driven in and copper brazed to ensure a leak proof connection.

Equipped with spring hinge lid, easily opened with an oil can spout and is self-closing. The cover is notched to hide end of spring, causing a smooth surface. Wiping waste cannot catch on end of spring, nor can hands be injured in handling.

FINISH: Mechanical Nickel Plate

D

PART N°	A THREAD	B MM	C MM	D MM	HEX A/FLATS	Suggested List Price
M3011	1/8" BSP	15.9	26.2	33.3	7/16"	\$20.80
M3017	1/8" BSP	19.1	30.2	36.5	7/16"	\$25.90
M3017WF						\$33.20
M3024	1/8" BSP	25.4	36.7	46	9/16"	\$25.90
M3024WF						\$33.20
M3025	1/4" BSP	25.4	35.7	46	9/16"	\$25.90
M3025WF						\$33.20
M3031	1/8" BSP	31.8	40.5	52.4	9/16"	\$28.90
M3031WF						\$41.70
M3032	1/4" BSP	31.8	40.5	52.4	9/16"	\$28.90
M3032WF						\$41.70
M3041	1/4" BSP	41.3	52.4	65.1	11/16"	\$35.20
M3041WF						\$43.00
M3042	3/8" BSP	41.3	52.4	65.1	11/16"	\$35.20
M3042WF						\$43.00
M3064	1/4" BSP	57.2	58.7	85.7	11/16"	\$53.30
M3064WF						\$62.00
M3065	3/8" BSP	57.2	58.7	85.7	11/16"	\$53.30
M3065WF						\$62.00
M3066	1/2" BSP	57.2	58.7	85.7	7/8"	\$67.80
M3066WF						\$75.80

SPECIAL NOTE

The letters WF following the part numbers denote they have syphon tube and wick fitted.

RETARD OIL FEED

A syphon tube and wick can be fitted in the bowl to feed the oil gradually at a small additional cost.

DISTANT BEARINGS

These oil cups can be supplied with a female shank for connecting a pipe or nipple to reach distant bearings or reservoirs.

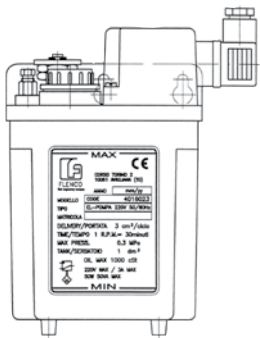


LOW PRESSURE OIL SYSTEMS



6.1 240V ELECTRIC PISTON MICROPUMPS

D

Suggested
List Price

PART N°	PAUSE TIME	Suggested List Price
4016020	5 min	\$953.00
4016021	10 min	\$953.00
4016022	15 min	\$953.00
4016023	30 min	\$953.00
4016024	60 min	\$953.00

Suitable to be used with the metered flow units indicated in Section 6.2, these 240 volt electric piston pumps can generate a working pressure of up to 42psi. Supplied standard with a low level control, all pumps have a 1 litre reservoir.

Other specifications include: delivery rates: 1 to 3 cm³, inbuilt control: fixed pause times, lubricant type: up to 250 cst max, low level control: included, outlet: 4mm tube.

Contact our Lubrication Systems Department who can recommend the right pump for your application.


i DID YOU KNOW

The LPOIL16 is semi-automatic lubrication of up to 16 points on machine tools, moulding machines and metal working machines. Providing a measured amount of oil to all points, the LPOIL16 reduces the need for hand lubrication and allows lubrication to be performed several times a day, quickly and easily.

The pump is of 1.5 litres capacity and is semi automatic providing 3cc per push of the handle.

All tubing, metering units and fittings are provided in the kit including 4mm copper main line tube, 4mm nylon bearing line tube and 4mm compression type fittings.

6.2 OIL FLOW METERING UNITS

E



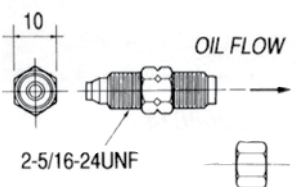
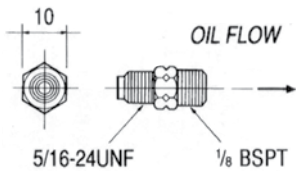
4066012



4066007



8125003



PART N°	SUITABLE FOR MOUNTING	SIZE	RATED FLOW PER MINUTE	Suggested List Price
4066010	Bearing	2	2.5 drops	\$13.70
4066011	Bearing	0	5 drops	\$13.70
4066012	Bearing	1	10 drops	\$13.70
4066013	Bearing	2	20 drops	\$13.70
4066014	Bearing	4	40 drops	\$13.70
4066015	Bearing	4	80 drops	\$13.70
4066016	Bearing	5	160 drops	\$13.70
4066001	Manifold	2	2.5 drops	\$13.70
4066002	Manifold	0	5 drops	\$13.70
4066003	Manifold	1	10 drops	\$13.70
4066004	Manifold	2	20 drops	\$13.70
4066005	Manifold	3	40 drops	\$13.70
4066006	Manifold	4	80 drops	\$13.70
4066007	Manifold	5	160 drops	\$13.70
8169033	Tube nut for above 4mm			\$3.40
8125003	Tube 4mm olive			\$0.87

Maximum operating pressure – 75psi,
Tube size – 4mm O.D.

Suitable for lube oils between 30 cst and 800 cst. Oil flow metering unit style – intermittent